



*"Traditionelle Handarbeit,
zeitgemäße Schönheit"*



Spengler
INDUSTRIES





Spengler

INDUSTRIES

Grüß Gott, fellow metal roof and wall enthusiasts!

You might find yourself here for a wide variety of reasons: You have a tricky conundrum no one else can solve. You need permanent solutions. You want something extraordinarily beautiful. You'd like something custom built, sustainably focused, historically accurate, or appropriate for challenging weather / environments. Maybe you want to expand your skills or attain knowledge that will help you successfully fulfill a project or differentiate you among your competition.

Whatever the reason, whoever you are, and in whatever industry or capacity you serve, I am thrilled you are here! I am sincerely grateful for the opportunity to solve whatever keeps you up at night. With absolute certainty, I know we can help. You are in the right place.

No other company this side of the Atlantic possesses the same caliber of skills and knowledge. We help you design, create, and experience the gorgeous, maintenance-free outcomes the Germans regularly enjoy. High German standards are not superfluous. They are the baseline. They are normal. They should be expected in the New World too.

We know you know this. We are honored to do business with forward thinkers like you who champion progress and seek a better way. By raising the standard, we all benefit.

Please give us every opportunity to answer all your questions. We look forward to helping you achieve all your objectives.

Schöne Grüße,



Christina Óvári
Spengler Industries
Phone: 801-462-5264
www.spenglerindustries.com
christina@spenglerindustries.com

5066 West Amelia Earhart Drive
Salt Lake City, UT 84116 USA

Why Should You Collaborate With Spengler Industries?

It's simple, really. It all boils down to 12 practical reasons why you should keep Spengler's card in your back pocket.



Sustainable Practices Matter

We harness Old World expertise and engineer eco-friendly and energy efficient products that last a lifetime.

Access To the Best

Access an endless variety of customized options and innovative techniques. We're your secret weapon.

Functional Products

No one should be saddled with an inferior product. We manufacture our own materials to exceed expectations.

Improve Building Standards

Our country's deficient building standards should be reexamined and raised to match the norms elsewhere.

We Care About You

We care that you are ecstatic with your project. You deserve to have a partner who will stand beside you.

Proper Building Practices

We use higher quality metal roofing materials and superior engineering. We know better than to cut corners.

Shared Super Powers

Want to look like the hero? Invest in a stunning product and save maintenance costs with green solutions.

Your Project Legacy

Your choice in materials, design, and installation guarantees exquisite structures that will enhance your community.

Competitive Edge

Give your business the edge in this competitive market. Gain the knowledge and skills no one else possesses.

Beauty Matters

We take a timeless design and elevate it to an unparalleled masterpiece with custom metal roofing solutions.

Stand Out As the Go-To

Technical challenges haunt even the best-planned projects. We provide you with solutions that others cannot.

Increase Your Skill Set

With globally-recognized credentials, we train other master building professionals. We teach the best.



Spengler

INDUSTRIES

We manufacture highly engineered metal roofing and wall cladding for structures all over the world. Whether you want to collaborate on restoring a castle or cathedral or need a jaw-dropping, high-end complement to your architectural design, our German-trained artisans rank among the best.

Contact Us

Website: <https://spenglerindustries.com/>

Email: hello@spenglerindustries.com

Office phone: 801-462-5264

Learn More About Spengler




Find Us on Social Media

 @spenglerindustries

 @SpenglerIndustries

 @spenglerindustries

 @SpenglerIndustries

 @spenglerindustriespinterest



25,000+ HOURS
Of Training



40 YEARS
Hands-On
Experience



110+
International
Publications



125+ Castles, Cathedrals,
& Other Iconic Cultural
Buildings



Endures For
1,000+ Years



Built On 6 Of 7
Continents

Scan the QR code to watch a video about how Spengler Industries can provide the best, longest-lasting roof possible.



A Company Unlike Any Other

At Spengler Industries, our craftsmanship elevates metal roofing and wall cladding to an art form, blending aesthetics with functionality into a seamless masterpiece. Our products boast unmatched durability, capable of standing strong against the harshest elements. While traditional roofing materials may falter over time, our metal roofs outlast generations, promising a lifetime of protection and elegance. We invite you to experience the difference that Spengler Industries can make in your designs. **Call 801-462-5264 for a free quote.**

*"Unsere Spenglerkunst lässt
Ihre Träume aus Metall
wahr werden"*

Sustainability, History and Spirituality Meet Under One Roof

Sustainability

We engineer lightweight, energy-efficient metal roofing systems, largely from recycled content. Hot or cold, our systems regulate inside temperatures naturally. Let us help you comply for LEED, Energy Star, and other environmental certifications. Cold roof and rain screen technology offer unparalleled efficiency.



Historic Restorations

We are board-certified in restoration and reconstruction with decades of experience with Europe's architectural masterworks. Replace your historically significant roofing with better-engineered, compliant materials that retain the same look. Recreate virtually any shape, size and design with roofing materials already approved by historic preservation societies.

Sacred Spaces

We've spent the better part of our careers building and restoring some of the world's most famous cathedrals, synagogues, mosques, and temples. We have worked alongside most major religions and styles, understanding the respect and profound care needed when building a house of worship. Your new roofing system will last for generations, virtually maintenance-free.

We Cover a Variety of Structures



An Array of Roof and Wall Cladding Solutions

No matter the project, we have a solution to fit your needs. Unlike other roofing materials, metal roofs do not require regular sealing, painting or specialized treatments to maintain their integrity. Since they are highly resistant to common roofing issues such as cracking, warping, and rotting, they will last a lifetime or longer, hassle-free. Our most popular products complement almost any architectural design. We have multiple styles, shapes, finishes, and colors to cater to diverse aesthetic preferences, whether traditional or contemporary.

Want to see metal roof samples?

We'd love to send you examples of the shingles you are interested in using in your design!

As an added bonus, you will receive a giant German chocolate bar in your gift box.

Call 801-462-5264 to request free metal roof samples.

Diamond Shingles



Quadro Panel



Standing Seam



Beaver Tail Tiles



Custom Shingles & Systems



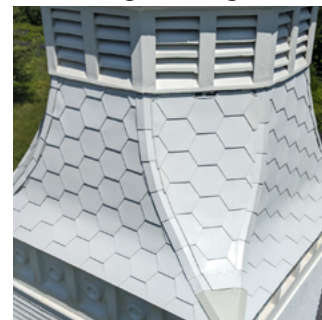
CorruGreat Panels



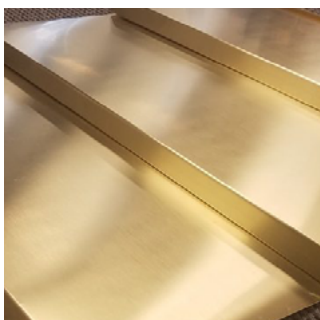
Subway Pressed Panels



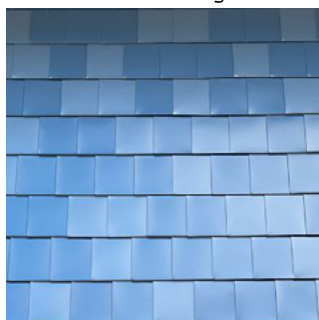
Hexagonal Shingles



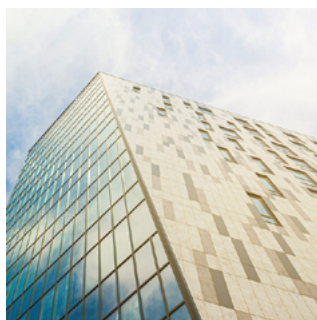
Prairie Panels



Plumeria Shingles



Cosmo Panels



Rainscreens



Masters on a Mission

When our company founder, Erno Ovari, came from Germany, he couldn't believe the level of roofing craftsmanship in the United States. Clients paid professionals for poor product quality and sub-par installation that required additional maintenance in a few years. From a moral standpoint, he couldn't stand by and watch people get robbed. He wanted to improve, not only the quality of roofing, but safety issues and aesthetic appeal. As an important link in a legacy of European roofing masters, he saw his mission laid out for him.



Our Core Values

Permanence

When we design a project, we want it to last - not just a decade or two. We want generations to appreciate the durability of each project.

Sustainability

Choose a roofing solution that is virtually maintenance-free, financially sound, environmentally-friendly and one of the most energy-efficient options possible.

Expertise

Our talented team details every project with precision. We hope to pass that skill set onto the next generation of professionals through our Training.

Innovation

We tackle any challenge! Whether you're facing extreme climates, or a challenging custom design, our systems have a solution to fit your needs.

"With expertise spanning traditional and modern projects, [Spengler's] skills are as versatile as they are comprehensive. [Their] meticulous attention to detail and passion for craftsmanship have earned [them] a place on the national registry as one of the select elite."

- Atelier Fine Metal Roofing

Erno Ovari, an Internationally-Recognized Roofing Master

Erno Ovari, founder of Spengler Industries, stands among the world's foremost authorities in fine metal architectural application. With a remarkable journey spanning decades of dedication and unwavering commitment to his craft, Erno's exceptional achievements have propelled him to the forefront of his industry. He is currently recognized internationally as one of the most decorated, credentialed, and progressive roofing masters in his field.

Erno obtained several advanced trade degrees in Germany and comes from a legacy of European metal roofing masters. He published two technical books specifically tailored for metal roofing specialists and has contributed his expertise to numerous reputable magazines and publications worldwide. He travels the globe, offering consulting services and seminars to share what he has learned.



Spengler Industries is board certified in restoration and reconstruction, an impressive feat considering the lofty standards that must be met. Our portfolio exhibits many castles, cathedrals and other works of architectural art that have lasted leak-free, maintenance-free and beautifully for hundreds of years. You may have seen our work in your travels!

Spengler Industries extracts the best of Old World European technique and combines it with the most cutting-edge innovation. While every project is unique, we guarantee practical, technical solutions for even the most challenging situations. With Erno Ovari leading the way, we hope to leave a legacy of engineering and beauty that lasts for generations.



Roof system failure due to poor craftsmanship, design and implementation.



Withdrawn and fractured fasteners in galvanically dissimilar materials with extended exposure to water create massive corrosion.



Poorly designed, placed, and installed snow fence resulting in failure all around.



Under-engineered shingles are no match for weather.



When even your replacements are failing, it's time to call us!

Dire Consequences for Those Who Chose Poorly

Metal, on its own, won't solve all roofing problems. It often bears the undeserved label of being prone to failure. However, when we combine superior manufacturing with traditional craftsmanship and modern engineering, this misconception couldn't be further from reality.

We not only meet but exceed the expectations of our clients.

Unfortunately, when anyone on the design-build team approaches a metal roof install without baseline knowledge, this "one-size-fits-all" mindset causes an entire system to fail. The consequences for the client can be catastrophic.

The most common difficulties with roofing:

- Inadequate design
- Poor planning
- Installed incorrectly
- Sub-par materials and/or accessories
- Does not account for weather
- Corrosion
- Exposed seams
- Punctures or dents
- Band-aid fixes

Consulting

We not only manufacture the highest quality metal roofing materials, but also provide support during planning and installation. We willingly meet with architects and building professionals to provide guidance on design, materials, and installation, especially when complex issues arise.

Training

Your roofing teams can become certified to install our systems through Spengler Industries training courses. This education instills confidence and produces a seamless, successful project outcome.



Contact us at 801-462-5264 to get a FREE, no obligation quote.

Make Over Your Project With a Peek at Our Palette

Color highlights the architectural features of any building project. Whether bold and vibrant, or subtle and neutral, colors harmonize your personality, project, and surroundings. At Spengler Industries, we offer a selection of high quality PVDF paint finishes. But we don't stop there! If your project needs to mimic the finish of a particular material like wood or rust, we translate your idea into the design. Take something from natural to supernatural with our specialty and custom colors and designs. Can you imagine a marine-grade PVDF paint customized to your perfect hue?



Use the QR code to see some specialty color and customization options.



Deep Black



Matte Black



Charcoal Gray



Musket Gray



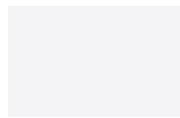
Slate Gray



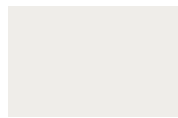
Ash Gray



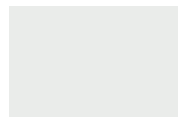
Almond



Bright White



Bone White



Stone White



Cityscape



Extra Dark Bronze



Sandstone



Sierra Tan



Medium Bronze



Mansard Brown



Burnished Slate



Dark Bronze



Hartford Green



Classic Green



Hemlock Green



Teal



Slate Blue



Royal Blue



Regal Red



Colonial Red



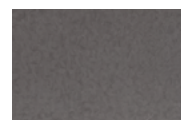
Burgundy



Terra Cotta



Galvalume Plus



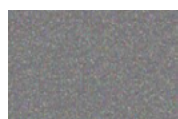
Vintage



Western Rust



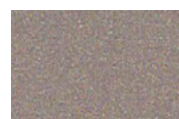
Copper Penny



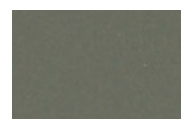
Weathered Zinc



Silver



Champagne



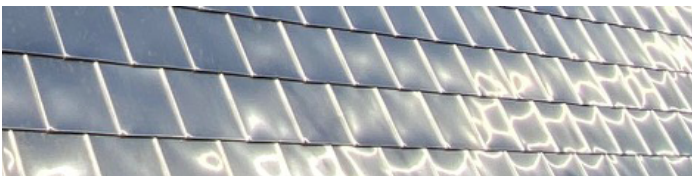
Aged Copper

The Timeless Allure of Precious Metals

Metal? For a roof? Absolutely! Metal products provide a sleek, upscale look with clean lines and finishes. They add a vibrant, dynamic texture to any design, making them an attractive, sophisticated choice. With proper installation, metal roofing systems result in reduced maintenance costs, increased home value, insurance discounts, lower lifetime costs, and longevity - a significant long-term savings! When properly insulated and equipped with reflective coatings, metal roofs can be energy-efficient and help reduce energy costs.

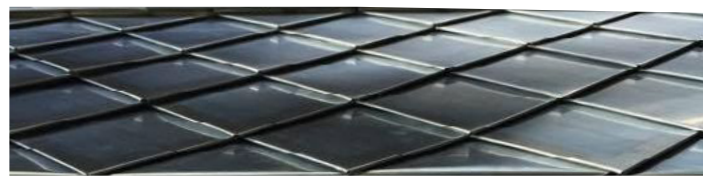
We invite you to browse our distinctive collection of versatile metal products.

Call 801-462-5264 for a free quote on your metal roof project.



Stainless Steel

Stainless steel, known for its exceptional durability, is an ideal choice for roofing and wall cladding. Resistant to corrosion and salt spray, it thrives in coastal and extreme weather conditions. Stainless offers versatility in finishes such as chromium oxide and titanium nitride, which can last for hundreds of years.



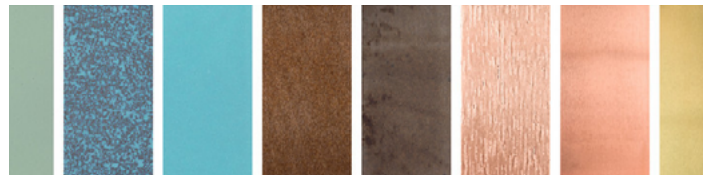
Zinc

Known for its beauty, durability, and workability, zinc offers a timeless option for metal roofing. While installation may require expertise, its patination process enhances its aesthetic over time. With applications ranging from urban to rural settings, zinc stands out for its longevity and low maintenance requirements.



Terne

Terne, pure tin coating a stainless steel substrate, combines durability with a changing patina over time. Ideal for various roof types and settings, it is particularly suited to historic restoration applications.

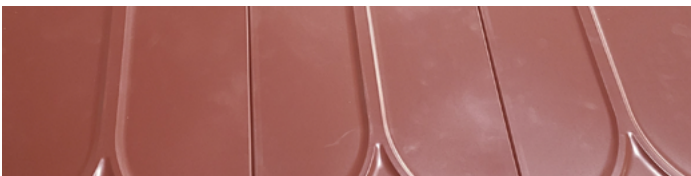


Copper

Timeless and virtually maintenance-free, copper is a premium metal for roofing. Whether in bare, chemically treated, oxidized, or pre-patinated finishes, copper ages gracefully, adding value to buildings over centuries. The broad range of finishes cater to diverse weather conditions.

Metal Combination Guide: Galvanic Chart

Material	Aluminum	Lead	Copper	Zinc	Stainless Steel	Galvanized Steel	Brass	Titanium
Aluminum	✓	✓	✗	✓	✓	✓	✗	✓
Lead	✓	✓	✓	✓	✓	✓	✓	✓
Copper	✗	✓	✓	✗	✓	✗	✓	✓
Zinc	✓	✓	✗	✓	✓	✓	✗	✓
Stainless Steel	✓	✓	✓	✓	✓	✓	✓	✓
Galvanized Steel	✓	✓	✗	✓	✓	✓	✗	✓
Brass	✗	✓	✓	✗	✓	✗	✓	✓
Titanium	✓	✓	✓	✓	✓	✓	✓	✓



Galvalume®

Galvalume®, a blend of zinc and aluminum on carbon steel, presents a cost-effective option for metal roofing. With a robust structure, it excels in areas prone to high winds, hail, and heavy snow loads. Its affordability, coupled with a variety of PVDF paint options, make it a practical and visually appealing choice.



Titanium

Titanium, one of the strongest and lightest metals, ensures a durable and sustainable roofing option. Resistant to fire, hail, and corrosion, it excels in extreme environments. With a lifespan potentially exceeding a thousand years, titanium is the epitome of permanent, maintenance-free, and environmentally friendly building solutions.



Aluminum

A budget-friendly choice, aluminum provides a lightweight and malleable solution for metal roofing. Suitable for marine and corrosive environments, it offers a range of PVDF paint finishes. While resilient, Galvalume® may be preferred in more severe weather conditions.

*"Formvollendete
Metallverkleidungen
für architektonische
Meisterwerke"*



Weathering the Storms

When Mother Nature unleashes her fury, Spengler Industries' metal roofs prove their mettle. Our superior construction and strength hold up in any extreme climate. From scorching heat to bone-chilling cold, a roof stands as a silent sentinel in ever-changing weather.

Call 801-462-5264 for a FREE, no-obligation quote.

Our roofs hold steady through all of the following weather events:

- | | |
|-----------|------------------------|
| Fire | Torrential Rain |
| Hail | Extreme Temperatures |
| Snow | Corrosive Environments |
| High Wind | Other Severe Elements |



With You Through All the High and Lows

Whether you look out your windows to a scorching desert landscape or you sport snow boots and wool socks for most of the year, we have a comprehensive system for you. Our highly engineered metal roofs address extreme temperatures with unparalleled effectiveness. Despite metal's inherent thermal conductivity, our thin materials minimize the retention and transfer of temperatures compared to thicker alternatives—which are virtually everything else. Our products insulate, keeping you cooler in hot climates, and warmer in freezing temperatures. A cold roof system or rainscreen maximizes efficiency when incorporated into a design.



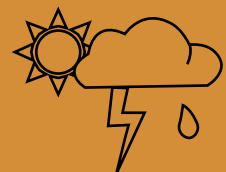
At Least **10 Storms**
A Year Cause
Billion-Dollar Damages



\$1 BILLION is the
Estimated Annual Cost
Of Roof Collapses Due
To Excessive Snow



There Were
950,640 Loss Claims
from Hail In 2019



Over 85%
Of Home Insurance
Claims Were Due To
Weather-Related Damage



Hail: Withstanding the Invisible Impact

After a massive hail storm, a roof might appear perfectly intact. How often do you check your roof? They are not generally visible from the ground, and it is not always convenient or possible to do so. Hail damage generally goes unnoticed until leaks, cracks or other obvious structural problems appear. At that point, major repairs are necessary.

Spengler Industries takes a pioneering approach to roof resilience. Unlike traditional materials susceptible to hail damage, our highly engineered systems contain interlocking shingles designed to be virtually impervious to hail. Water cannot seep in and the shingles will not break from the force. For those in hail-prone areas like the American Midwest (Texas, South Dakota, Nebraska, Kansas, Oklahoma, Minnesota), our stainless steel shingles provide an additional layer of defense, promising long-term durability and peace of mind for years to come.



Fire: Blazing a Trail Using Better Quality Materials

When black smoke blots out the summer skies, you suspect rampant wildfires, especially in California. Wherever there's a potential for drought, fires follow. For dry places like Texas, Colorado, Arizona, Idaho, Washington, Oklahoma, Oregon, Montana and Utah, the choice of roofing material becomes critical. Spengler Industries champions the unmatched resilience of our metal roofing and cladding systems in the face of fiery challenges.

Traditional roofing materials can ignite under the intense heat of a house fire. In contrast, our engineered metal systems are designed to surpass safety standards. While metals inherently possess high melting points, compared to traditional materials, it's not solely about the metal. Our commitment to engineering ensures that these metal systems offer a robust defense against fires, enduring for generations while providing a maintenance-free shield against the elements.



Wind: Blowing the Competition Away

When the wind whips your hair into your face, you brush it behind your ear, not thinking twice. But when raging gusts threaten the integrity of your home, you need to consider the protective armor offered by metal roofing and cladding. Spengler Industries crafts systems specifically for hurricane-prone areas like Tornado Alley, the Gulf Coast, Ohio, West Virginia and bordering East coast states. As wind-driven destruction intensifies, our metal roofing systems stand resilient against ferocious winds and contribute to community-wide safety.

Thanks to advancements in manufacturing, Spengler Industries' metal roofing systems claim unparalleled durability, low-maintenance requirements, and aesthetic appeal, even in the face of formidable storms. Fortify your home so that it not only endures but overcomes challenges posed by extreme weather events.



Snow: Let Us Take the Load Off of You

During the winter, holiday movies spotlight the magical moment when snowflakes begin to dust the landscape. In places like Canada, the Rocky Mountain Corridor (Colorado, Montana, Idaho, Utah), and in the Northeastern and Great Lake states of the US, the clouds can open, dumping several feet of heavy, wet snow in a short time. Roofs take the brunt of this accumulation. Spengler Industries provides a comprehensive solution to safeguard structures with a specially-engineered roofing system that insulates against the freezing temperatures. Our systems withstand massive loads of snowfall, fortified by world-class snow guards that prevent potential disasters and avalanches.

Choosing our systems not only mitigates legal issues and safety concerns, but also showcases respect for your building, the environment, and the well-being of those around you. Let us enhance your building's efficiency and safety with unparalleled snow abatement products, tested and proven across the world.

Call us at 801-462-5264 for a free quote!



Corrosive Environments: Don't Let Concerns About Your Roof Eat Away at You

Roofs corrode quickly when exposed to natural and toxic chemicals belched into the air. Many natural events create a surprisingly corrosive environment, including volcanic emissions in Hawaii, industrial emissions in urban settings, oil field emissions in the Permian and Appalachian Basins and along the Gulf Coast, geothermal emissions in Yellowstone, and the salty sea air.

Spengler Industries is your trusted partner in fortifying structures against nature's corrosive forces. We determine the appropriate materials to use based on the location, exposure and other extreme climate concerns. We engineer our metal roofing systems to endure the harshest conditions. With a commitment to excellence, our corrosion-resistant roofing solutions undergo rigorous testing worldwide, proving their efficacy in withstanding the elements unique to each setting. Even in the most corrosive environments, our products require minimal maintenance and remain blemish-free and pristine.



Torrential Rain: No Exposed Seams, No Water Seepage

Traditional roofing materials already have a short lifespan, but a rainy climate really puts them to the test. Spengler Industries engineers metal roofing, cladding, and rainscreen options for this very reason, especially for East Coast, Midwest states, Gulf Coast and other locations that experience significant, heavy, wind-driven rainfall.

Our systems act as a barrier, or envelope, to a structure. When our interlocking shingles are installed properly, they are virtually impervious to water seepage because there are no exposed seams. Our rainscreen systems stand off from the wall sheathing to create a space between the wall and the screen. This creates a drainage plane for the water and uses the moisture/air barrier for additional insulation. Our systems secure your peace of mind, even in the wettest zones on the planet.

Call 801-462-5264 for a FREE, no-obligation quote.



Parkitecture: A Timeless Design Philosophy

In the late 1800's, the National Park Service (NPS) sought to create structures that seamlessly blended with the natural environment. This "Parkitecture" aesthetic encompasses a diverse range of structures, from hotels and lodges to campgrounds, administrative facilities, fire towers, and more. One of the challenges facing Parkitecture is the reliance on traditional materials, such as thick, textured wood shingles, which are now restricted in many areas due to fire hazards.

At Spengler Industries, we offer high-end, long-lasting metal roofing and cladding systems that provide forward-thinking solutions to environmental challenges. Climate-related challenges like heavy snow loads and corrosive marine environments give us an opportunity to shine as an exceptional design-build partner for Parkitecture projects.



OLD FAITHFUL INN, YELLOWSTONE PARK.



Government Certification and Historic Preservation

- Certified government contractor
- Restoration/Reconstruction of historic buildings on federal lands
- Currently contracted with Yellowstone Park, National Forestry Service and other National Parks to provide solutions.



Crafting Resilient Parkitecture

In a world where architectural solutions must seamlessly blend with nature, Spengler Industries emerges as a beacon of excellence. With a dedication to lasting beauty, leak-proof performance, and maintenance-free longevity, the company embodies the principles of Parkitecture. As the architectural landscape evolves, Spengler Industries remains a reliable partner, shaping structures that not only stand the test of time but also harmonize with the natural wonders they are set against.

One-Stop Shop: World-Class Roof and Cladding Accessories

Gutters
 Snow Guard
 Custom Roof & Wall Systems

Seamless
 Radius Valley
 Cold Roof & Rainscreen

All the Accessories For Your Metal Building Envelope Under One Roof!



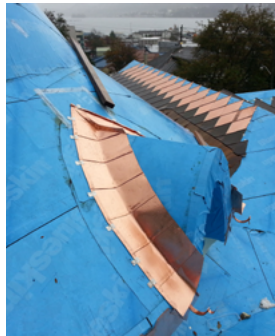
Snow Guards
 We've tested our snow guards for decades in the harshest conditions in the high Alps; there are no better snow abatement systems. You can be assured of their performance no matter how severe the weather.



Rain Gutters
 We manufacture all pieces that fit a metal roof, cladding or rainscreen system, including rain gutters so strong you can walk around in them! Count on lifetimes of reliability due to our gutters' exceptional performance.



Custom Systems
 We design and build custom roof and wall systems to the tightest of tolerances. Whether you wish to replicate historic pieces or an entirely new, contemporary component, we will create exactly what you need.



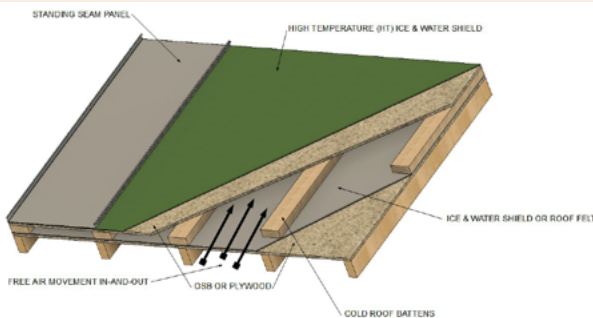
Radius Valley
 Believe it or not, there is not a standard, one-size-fits-all solution shared between our clients' projects. We calculate clever solutions for the most complex architecture.



Seamless
 Let us help you create an eye-catching, seamless display of artistry and permanence. You can't stump us! We offer maintenance-free solutions for even the trickiest details.



Technical Support
 We're committed to the success of everyone on the design-build team. From design consultation to hands-on instruction, we help you achieve your goals.



Cold Roof & Rainscreen
 By utilizing air instead of traditional insulation, cold roofs and rainscreens redefine energy efficiency. Build correctly from the beginning and avoid crutches like heat tape forever.



801-462-5264
SpenglerIndustries.com