



*Training for Metal Roofing
Artisans and Installers*



Spengler
INDUSTRIES



Become The Premier Roofer In Your Area By Certifying Your Installation Team

As a roofer, you want to provide your clients with a quality product you both can be proud of. As an individual, you want to invest in your craft and stand out from the competition. A seminar with Spengler can give you both.

Spengler offers innovative and cutting edge roofing techniques, combined with centuries-old design and engineering methods that have proven successful through ages. Certification from Spengler can elevate what you offer to your clients, meaning more satisfied customers and referrals to your business. It will also expand your abilities, creating more job satisfaction for you and your team, and more fulfillment in your work. You'll know that you're creating something that will last for lifetimes. You can be capable of more than the standard asphalt roof - with Spengler's education, you can craft beautiful roofs for all weather conditions, all types of buildings, and with historic value.



"With expertise spanning traditional and modern projects, [Spengler's] skills are as versatile as they are comprehensive. [Their] meticulous attention to detail and passion for craftsmanship have earned [them] a place on the national registry as one of the select elite."

- Atelier Fine Metal Roofing

Spengler Industries Class Descriptions

Join our Spengler Industries Classes to gain proficiency in the German method of metal roofing and cladding. We start with the most technically difficult metal system to master: double locked standing seam. This system, rooted in a European tradition dating back over 1,000 years, ensures unparalleled durability and adaptability to various shapes.

Through our program, participants will learn the fundamentals of full seaming to ensure a lifetime warranty product. No sealing or roof soldering allowed. Tools will be provided during the class, accompanied by a recommended tool list for optimal work technique in the field. Attendees are responsible for the cost of, or providing their own raw materials, typically three standard sheets of 16 ounce, cold rolled 1/8 hard copper per participant per class. For the zinc class, we need copper to start, but some zinc materials will be necessary. All materials will be assigned by the instructor based on attendee count, skill level, and class type. Gain proficiency in metal roofing with us and elevate your skills in this time-tested craft.

Every day starts with hands on training.
Bring your work clothes!

We start with the simplest details which will then be demonstrated how to perform then taught individually to each of the attendees until it is understood.



*"Die Könige des
Dachhandwerks – Perfektion
bis ins kleinste Detail"*

Choose a Fine Metal Roofing Class That's Right For You

Introduction to Metal Roofing with Copper

Duration: 3 days

We start at your experience level and tailor from that point. All levels of experience welcome. If you're already experienced, we can make bigger, faster steps. We will NOT waste your time. You WILL come out of class significantly more skilled and confident.

- Understand the European method of double locked standing seam
- Learn fully integrated seaming techniques
- Utilize the proper tools for the job
- Implement proper design and water channels

We teach theory, so you know the "why" behind everything.

We teach technique, so you have the craftsman skills for pristine implementation and result.

Zinc Class

Duration: 2 Days

Note: Zinc is notoriously technical. We will be practicing with COPPER for the majority of this class. 16 ounce, cold rolled 1/8 hard copper is the easiest metal to work with. Copper's malleable characteristics make it easy to manipulate and will alleviate student frustration. We will transfer to zinc use only after certain technique benchmarks have been achieved.

- Focus on full-size mock-ups and will start with copper. Yes. Copper. We'll work up to zinc only at the end of class when proper technique on copper has been established.
- Study soldering, roofing and facade installation
- Master zinc's characteristics and how to plan and implement from start to finish
- Leave with the certification to install zinc systems

Advanced Metal Roofing Class

Duration: 1 Added Day (4 Days Total if combined with Intro)

- Integrate seaming into more complex architecture
- Navigate beginning radius (round valleys)
- Refine skills learned in Intro class
- Finish details beautifully so your work looks tight and competent and gorgeous

Radius Class

Duration: 2 Days

Advanced level class a prerequisite

- Engineer radius valleys with radius architectural details
- Make and plan for domes, barrel roofs, turrets and other common radius features

Metal Shingles Class

Duration: 2 Days

- Apply a variety of metal shingles starting with Diamond shingles
- Solve applications on complex architecture
- Explore compositing with differing metal systems

Special Project Class

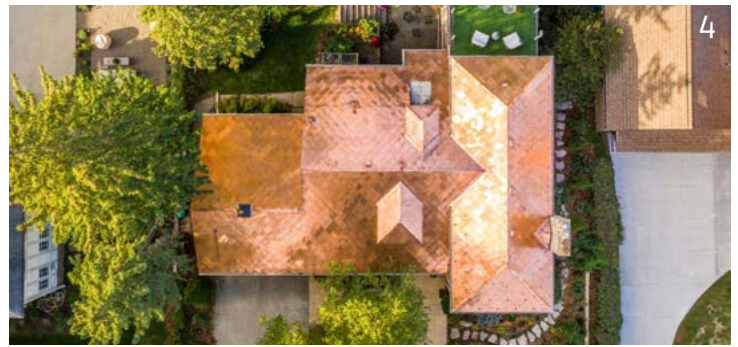
Duration: Time Depends on Project and Needs

Tailored class specifically designed for unique projects and requirements. Customized curriculum based on project specifications and technical details.

Class Requirements

When We Travel to Your Facility:

- Workshop, or facility we can use.
- You will need to build one mock-up per two students. (If you have 5 students, 2 mock-ups are sufficient.) There are no specific measurements and your mock-up can be built very simply. We only ask that it is built sufficiently strong to be able to withstand lots of hammering.
- 1-2 sheets of 1/8 hard copper sheets (*) per student. (Amount depends on the class selected.)
- Bender/handbrake.
- Hand tools, as listed separately.
- Lunch is not required, but it's preferable to order in (pizza etc) so we don't waste time.



When You Travel to Us in Utah:

- We will meet in Spengler Industries' facility.
- Please bring work clothes.
- We provide 1-2 sheets of 1/8 hard copper sheets (*) per student. Amount depends on the class selected. Students are responsible for the cost of each sheet used.
- We supply lunch.
- Students are responsible for flight, transportation and lodging. (Ask us for recommendations.)

(*) Recommendations for metal used in the class: Using galvanized or stainless steel (*) in the basic class is not recommended. The students without the basics will spend more time and energy with the material itself rather than the technique. Those materials tend to tear, rip and crack... when using the wrong technique.

In the advanced courses, we can use a variety of sheet metals. In our first/basic course, we highly recommend practicing only with 16 oz/0.5 mm cold rolled 1/8 hard copper. 1/8 hard is key. Copper's malleable characteristics make it easy to manipulate and will alleviate student frustration.

Zinc classes are available. Students learn techniques on copper for this class and move on to zinc at the very end.

Payments

We require 50% of the total amount upon reservation. The remainder will be invoiced and due upon the day of completion of the class.

Credit card payments accepted with an additional 3% processing fee.

Checks can be mailed to:
Spengler Industries
5066 West Amelia Earhart Drive
Salt Lake City, UT 84116

Wire transfers also accepted.

Cancellation Policy

In the event the hiring company needs to cancel, the 50% deposit will be refunded less any booking fees for the seminar rooms etc. if applicable, and a 15% cancellation fee will be imposed.

Should Spengler Industries need to cancel, all monies will be refunded in their entirety OR we can schedule a new class appointment.

Your Instructor, Erno Óvári

European native Erno Óvári is one of the most skilled and knowledgeable fine metal roofing artisans in his field today. At twelve years of age, he enrolled in Hungary's top four-year apprenticeship program where he worked on centuries old castles and cathedrals. His love for his trade and drive for more knowledge took him to Germany - "the country of regulations." There, he simultaneously worked and attended even more years of schooling to be eligible to apply for Master's School.

Master's School is a famously demanding, difficult, competitive, and expensive four year program punctuated by a final exam which must be passed. The exam carries a daunting 50% fail rate. Those who pass, hold the highest contractor degree possible on the continent: the Meisterbrief. German schools are particularly notorious for being both the best and the most challenging. Consequently, those who graduate are held in the highest esteem.



Erno has over 25,000 hours of post graduate training in the most elite schools in Europe. He holds numerous certifications and is board certified in restoration and reconstruction. Erno has 38 years of experience working on buildings ranging from the ultra modern to some of Europe's most beloved pieces of historical architecture. He has worked on and consulted for projects all over the world and in diverse climates and locales.

"In Germany, the roof is nearly the most regulated part of a building; it protects everything. I teach correct principles and techniques that give both my students and their clients a sense of well-being since my students possess the skills to make their work last forever." - Erno Óvári

Tool Catalog

Proper tools of the trade are important as you become proficient at installing a Spengler Industries roof. We recommend these tools, at minimum, for ease and proper installation techniques. We will coordinate provisions with your team to ensure you are prepared for training.



Round Cutting Shears Left and Right

Directional shears for cutting round shapes



Combination Shear Right

Directional snips for cutting right



Needle Nose Pliers

For twisting



Combination Shear Left

Directional snips for cutting left



Flat Nose Pliers

For very short, straight bends



Hand Bender Pliers

For straight bends



8 inch Hand Bender Pliers

For larger, straight bends



Twister

For twisting larger bends



Double Seaming Iron

Used when seaming metal



Flat Seaming Iron

For seaming curved areas



Growing Hammer Twisted

For stretching / growing metal for seaming



Drip Edge Bender

Bends drip edges



Drip Edge Closer

Closes drip edges



Single Seam Closer

Closes single seam
(the first step in a double seam)



Double Seam Closer

Closes double seams



Barrel Seam Closer

For short, radius barrel seams that a larger seamer cannot accommodate



Tinsmith Hammer 300 gr

Precision hammer



Notcher

Notching sheet metal



Seaming Mallet

Our most used tool. For forming and creating seams



Gutter Bracket Bender

For bending gutter brackets



Pelican Snips

A shear / snip to cut long straight lines without the need to lift up the metal edge



*“Hoch lebe unsere
Spenglerkunst!”*

1. Call Spengler to discuss your training needs so you can offer more prestigious, technically advanced roofing projects.
2. Reserve your training dates and location. We can come to you, or vice versa. Call our team to book your Spengler training.
3. Enjoy up-leveling your service offerings, improve your technical abilities, and increase your revenue.



Spengler

INDUSTRIES

Seminar Terms and Conditions

We are very interested in raising the quality of workmanship here in the U.S. and abroad. Our mission statement is to share our vast knowledge and experience with others who wish to learn and make steps forward.

Pricing and Planning

Course prices change according to a number of variables, but a typical course is billed at \$900.00/per day, per student.

Minimum of 3 students required. If more than 7-8 students attend the class, we will bring an assistant.

A class-day consists of 8 hours including two 15 minute break times and one 30 minute lunch time.

We charge a daily rate of \$500 for travel to your facility (the charge is per class, not per attendee) - Travel charges are not applicable when you travel to us.

Travel expenses will include airfare, hotel, rental car and travel time to be documented and invoiced to you upon completion.

We will let you know the list of the required tools for the class so you can purchase them before the class starts. The tools can be sent directly to our training center, if applicable. Please plan 3 - 4 weeks for the tools to arrive.

We recommend scheduling a class 4-5 weeks out. The best days (from past experience) tend to be Wednesday through Friday which allows for us to be able to stay on until Saturday if we're still needed.



801-462-5264
SpenglerIndustries.com